



Boca Raton II Tri-Rail Station PD&E Study and 30% Documents Public Alternatives Meeting

December 5, 2017
Spanish River Library

Introductions

Agenda

- Introduction
- PD&E
- Feasible Station Locations
- Station Concept Plans
- Schedule
- What's Next





Partner Stakeholder Agencies

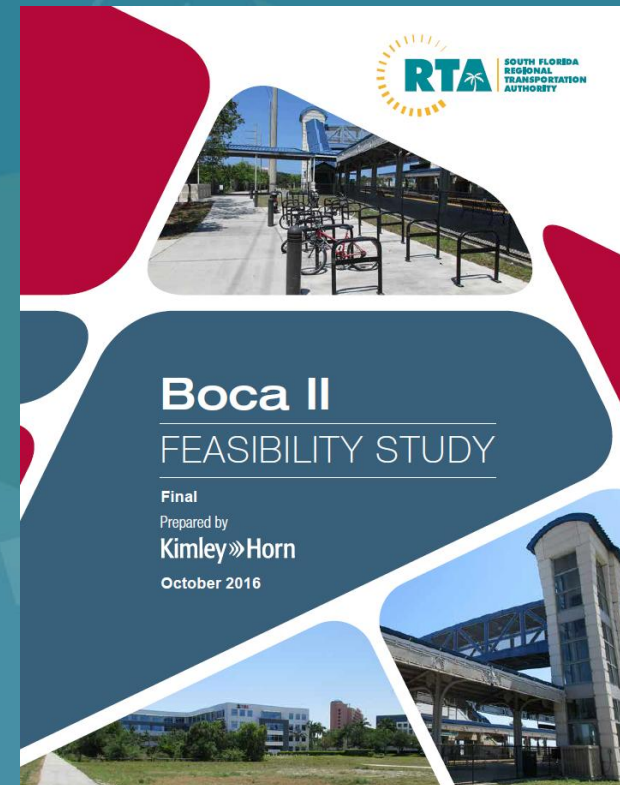


Introduction

- The objectives of a Project Development and Environment (PD&E) study are to perform necessary social, environmental and engineering studies of a proposed transportation improvement to support decisions concerning if and where it should be built and what will be the basic design concepts.

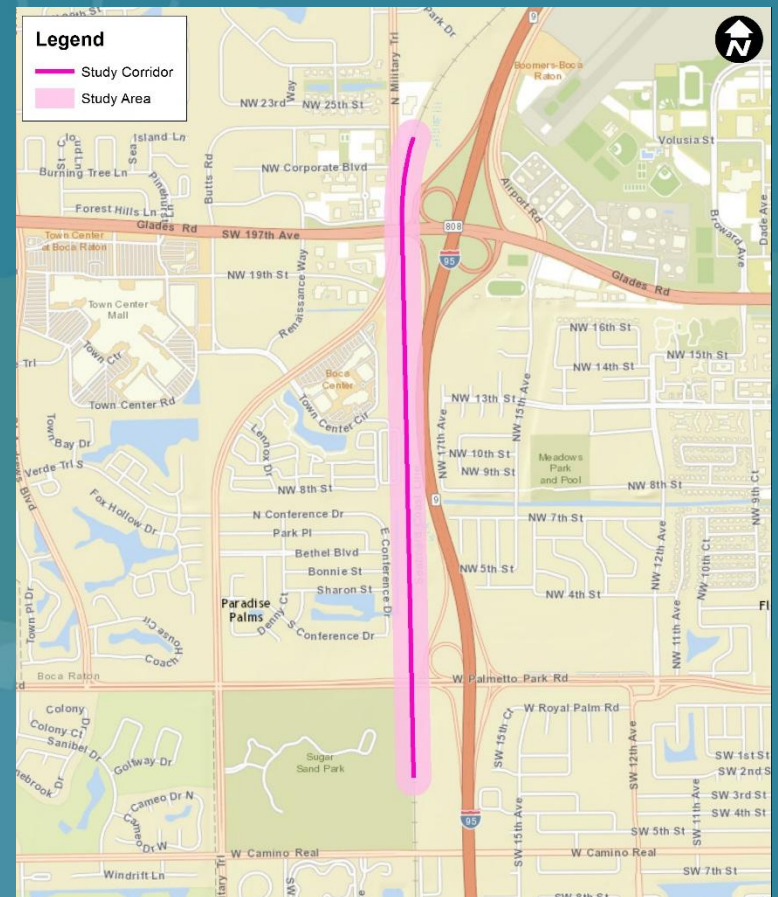
Introduction

- Background for Boca Raton II Tri-Rail Station
 - Included in:
 - 2040 Long Range Transportation Plan (LRTP) - TPA
 - SFRTA Transit Development Plan (2008 and 2013)
 - FDOT Florida Rail Plan Investment Element
 - Site Location Analysis
 - Completed in May 2010
 - Feasibility Study
 - Completed in October 2016
 - Conclusion: *No Fatal Flaws*



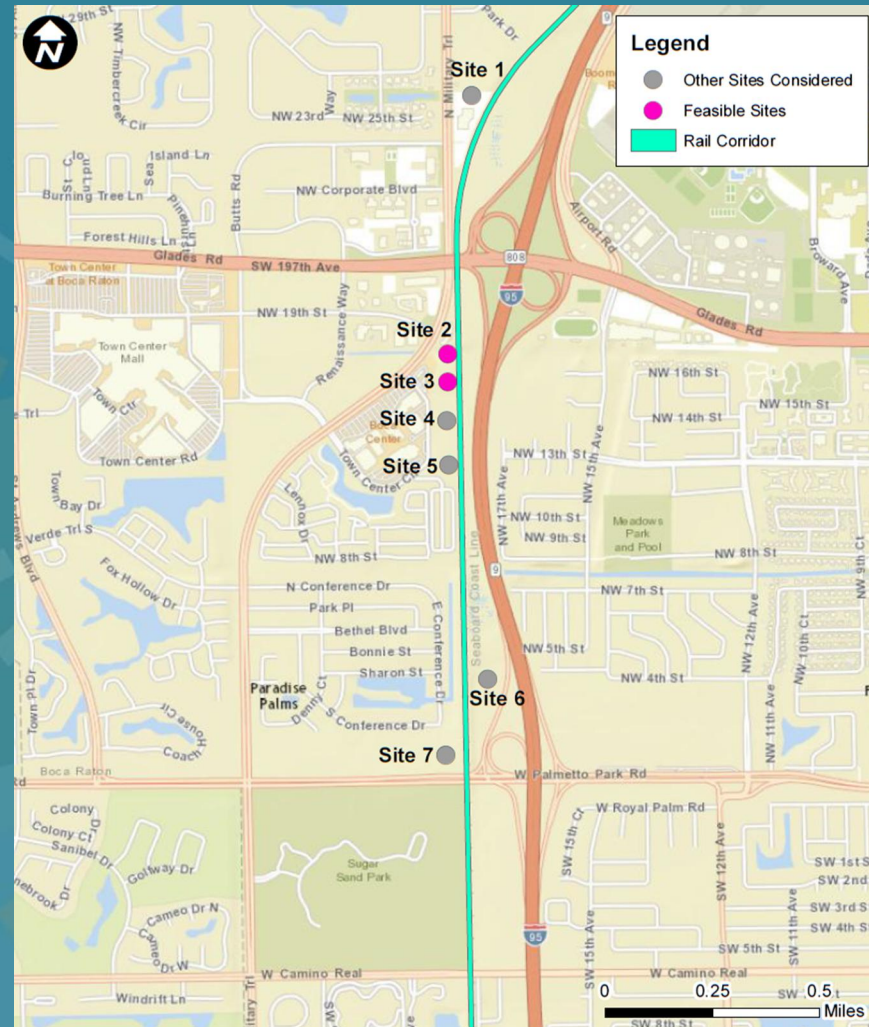
Introduction

- Study Area
 - South Florida Rail Corridor
 - North of Glades Road to South of Palmetto Park Road



Feasible Station Locations

- Began with 7 sites
- Eliminated 5 based on initial evaluation
- 2 Feasible Sites
 - Site 2 – Former King’s Deli Site
 - Site 3 – Northern Town Center Circle Site

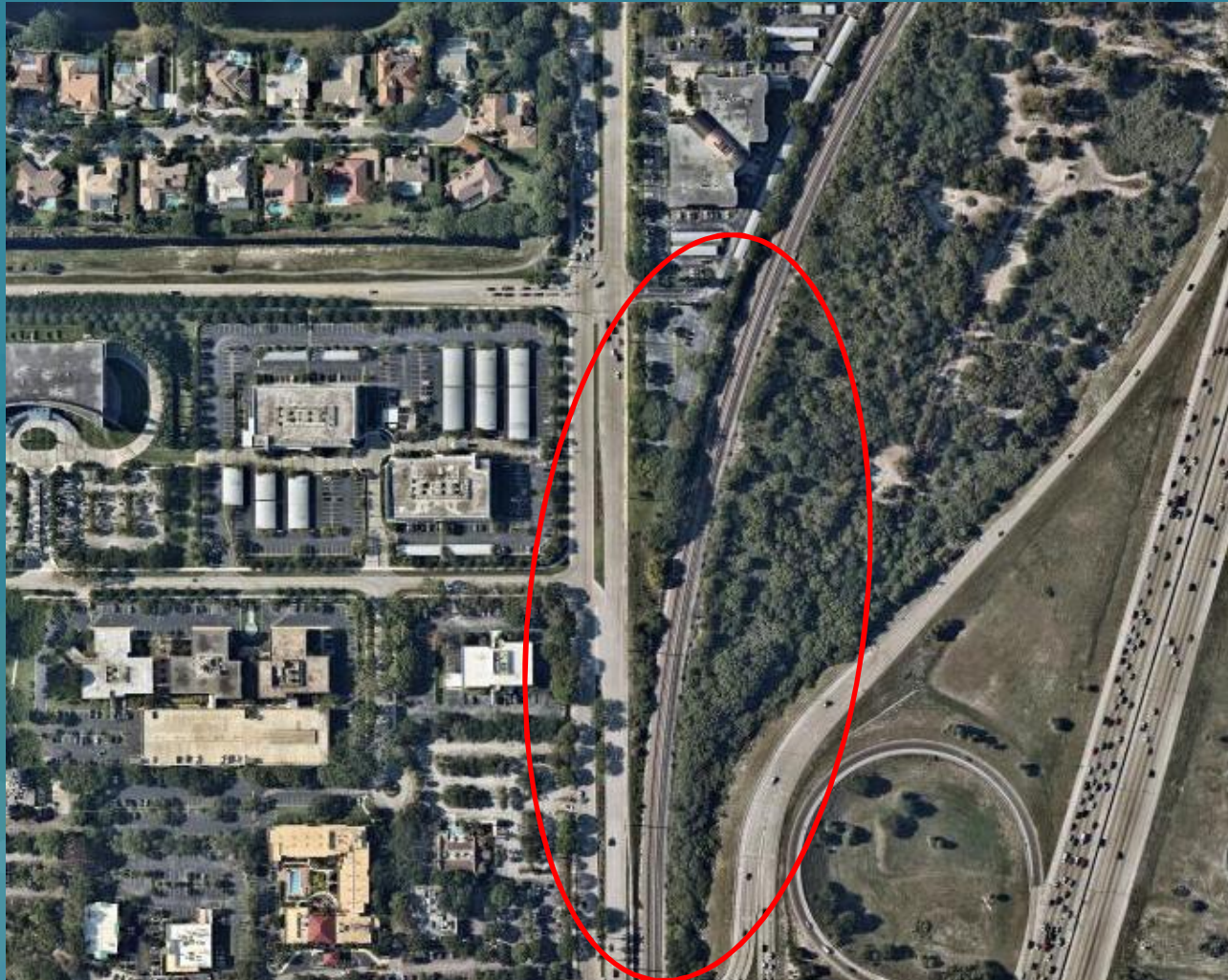


Fatal Flaws

- Site 1 – Too much track curvature
- Site 4 – Required too much land
- Site 5 – Space limitations during construction and operation
- Site 6 – No roadway access to Palmetto Park Road
- Site 7 – Environmentally Sensitive Area

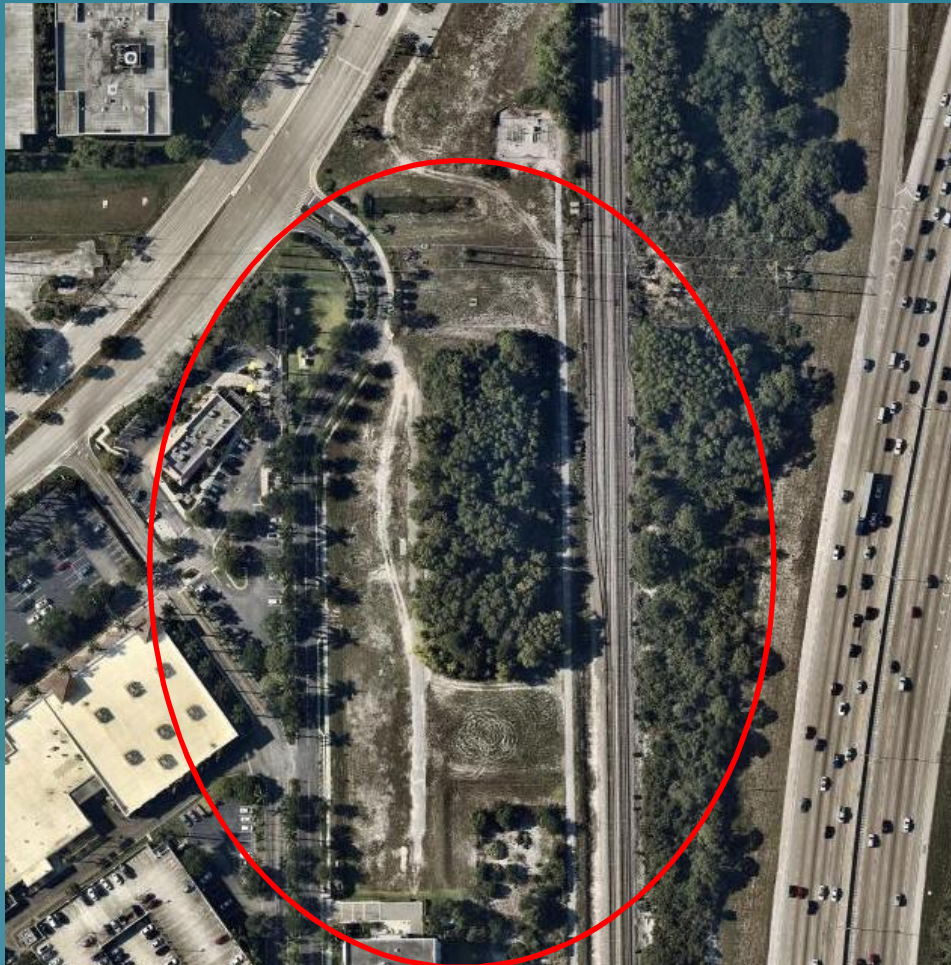
Site 1

Too much track curvature



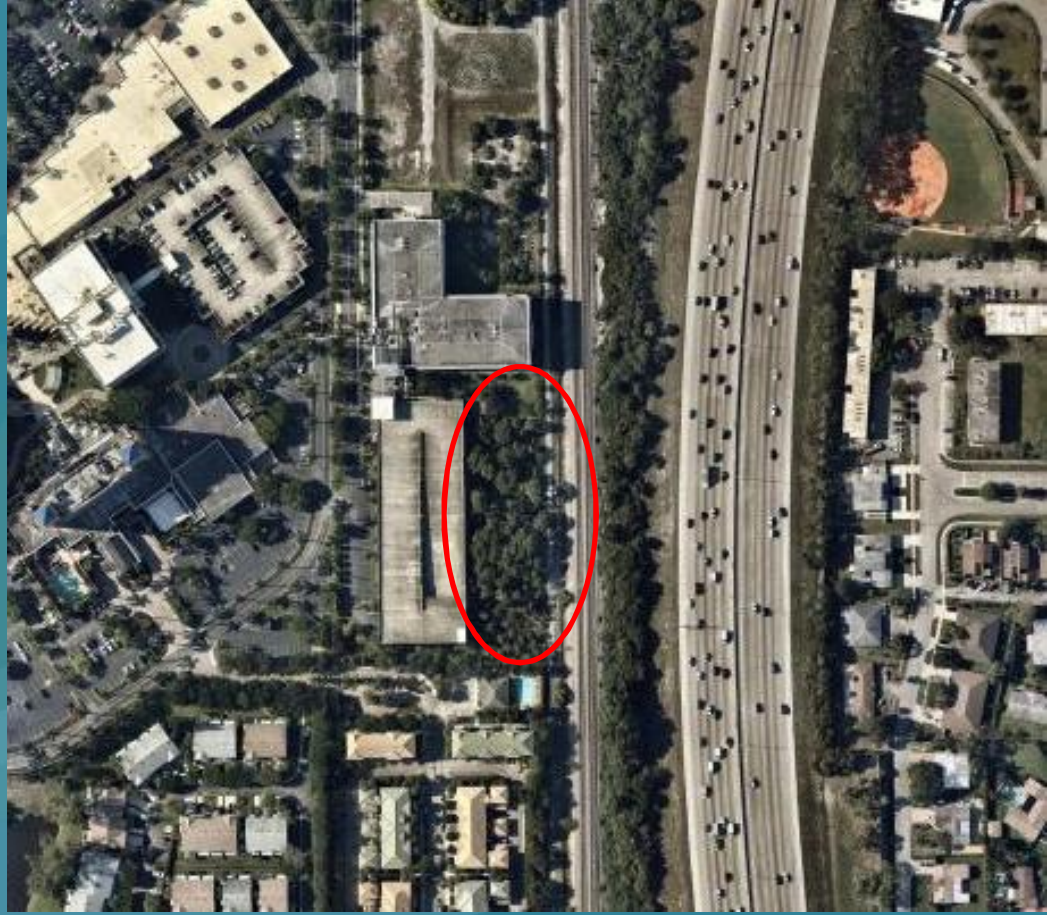
Site 4

Required too much land

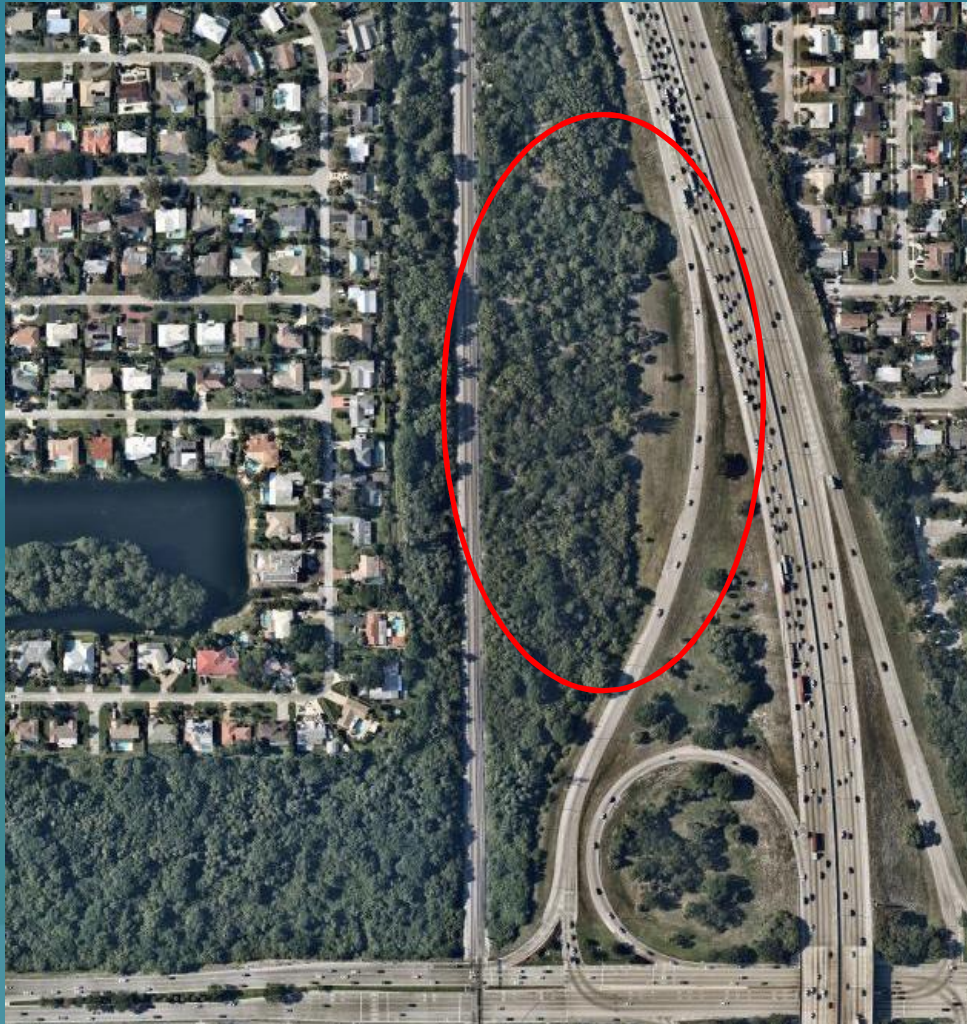


Site 5

Space limitations during construction and operation



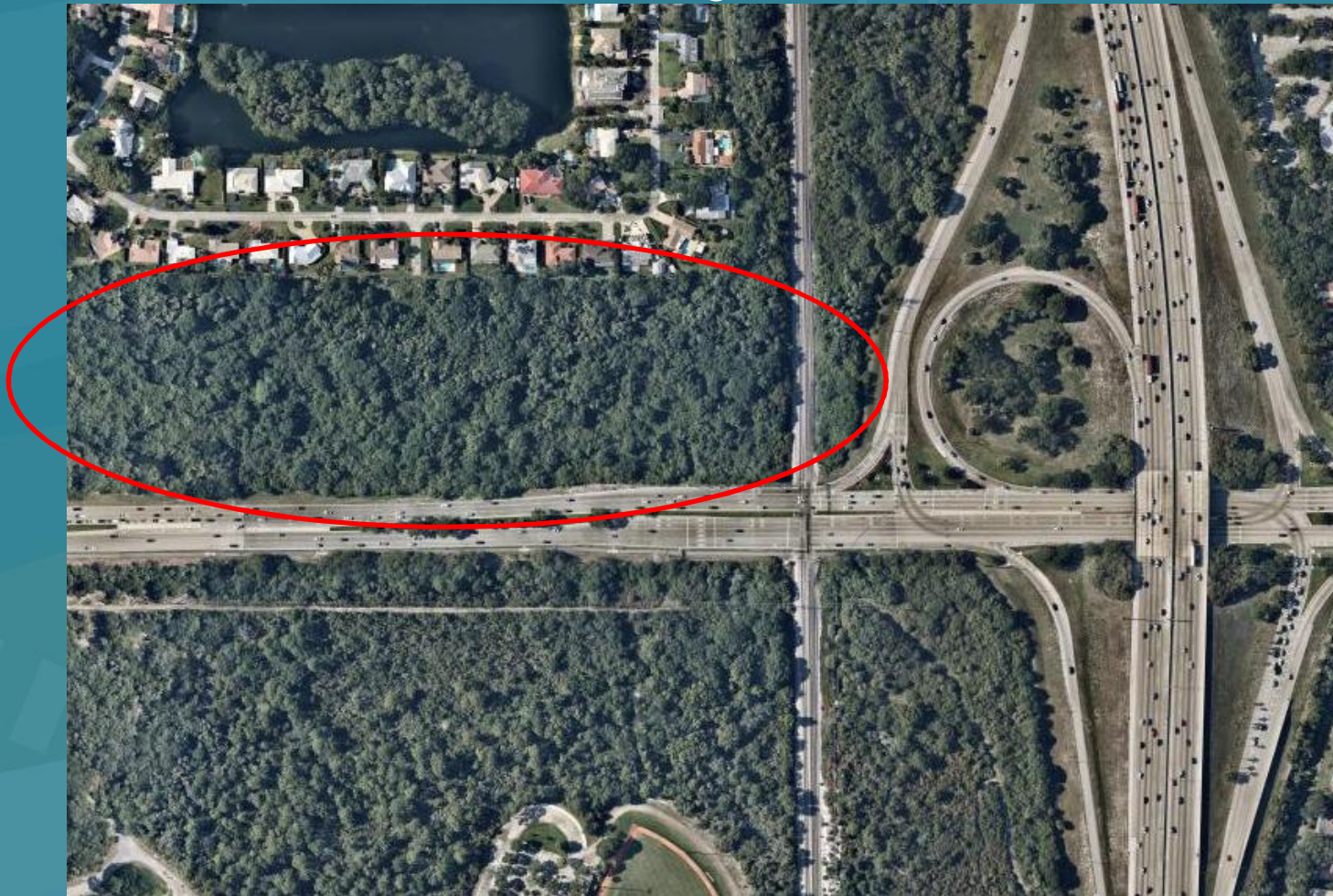
Site 6



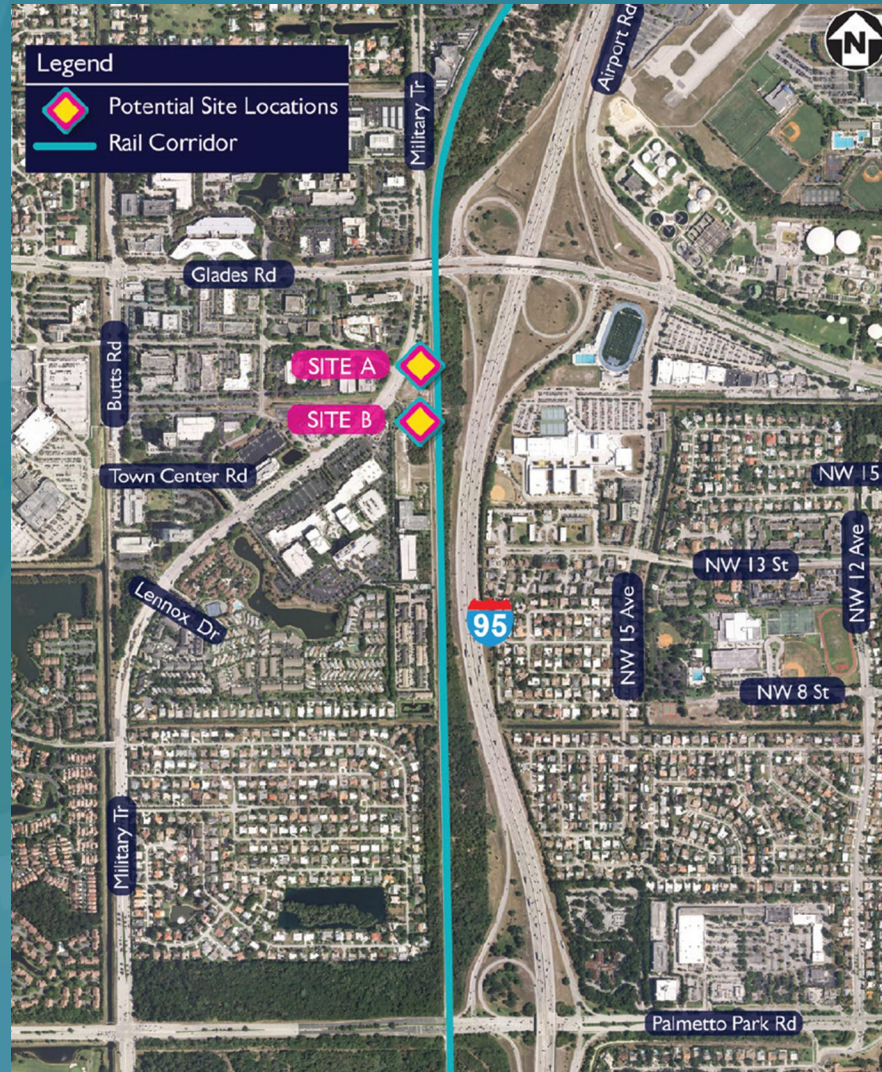
No Roadway access
to Palmetto Park
Road

Site 7

Environmentally Sensitive Area



Feasible Sites



Site A



Concept Plan A

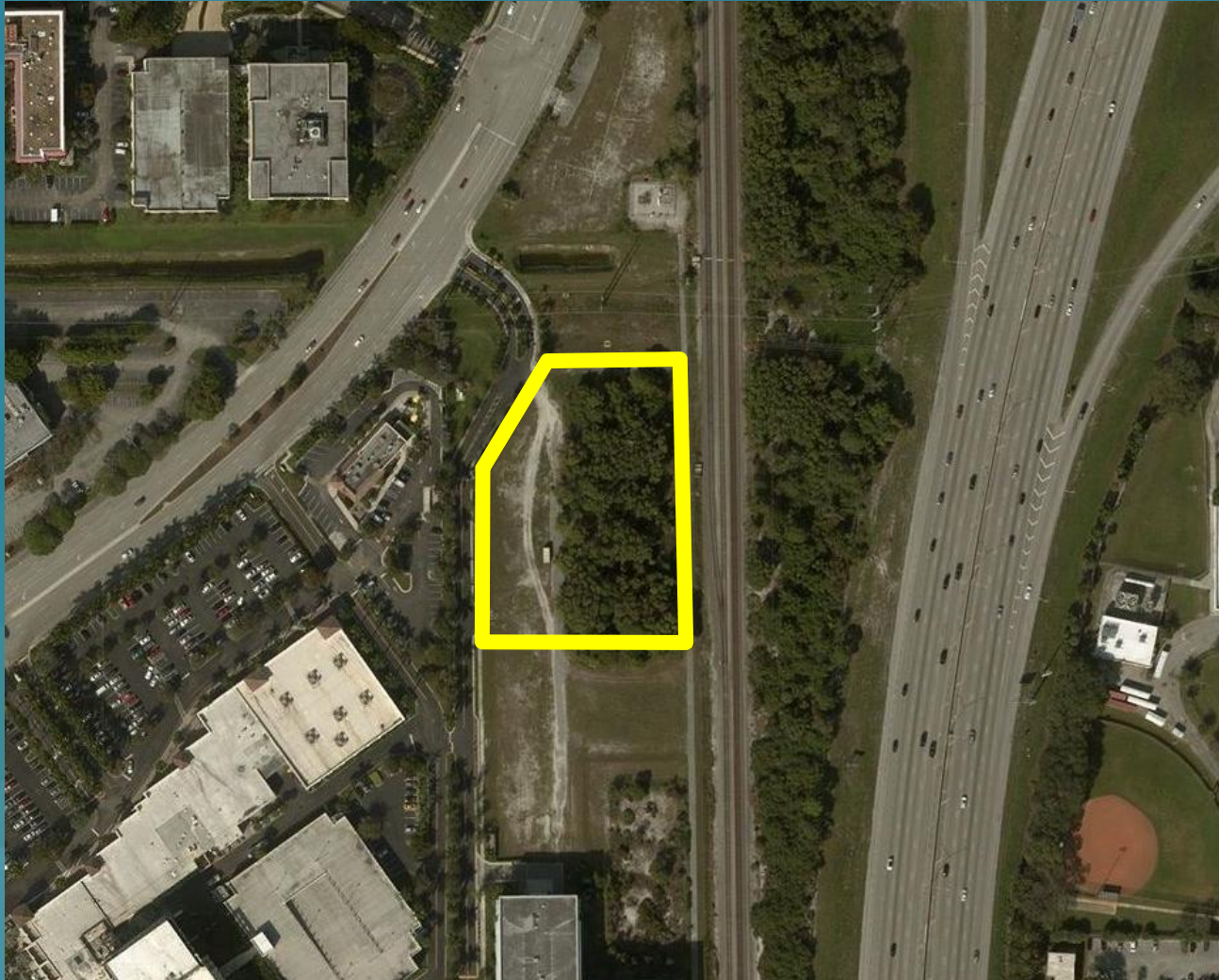


Concept Plan A



- Acreage
 - 2.12 Acres
- Parking
 - 45-55 Spaces

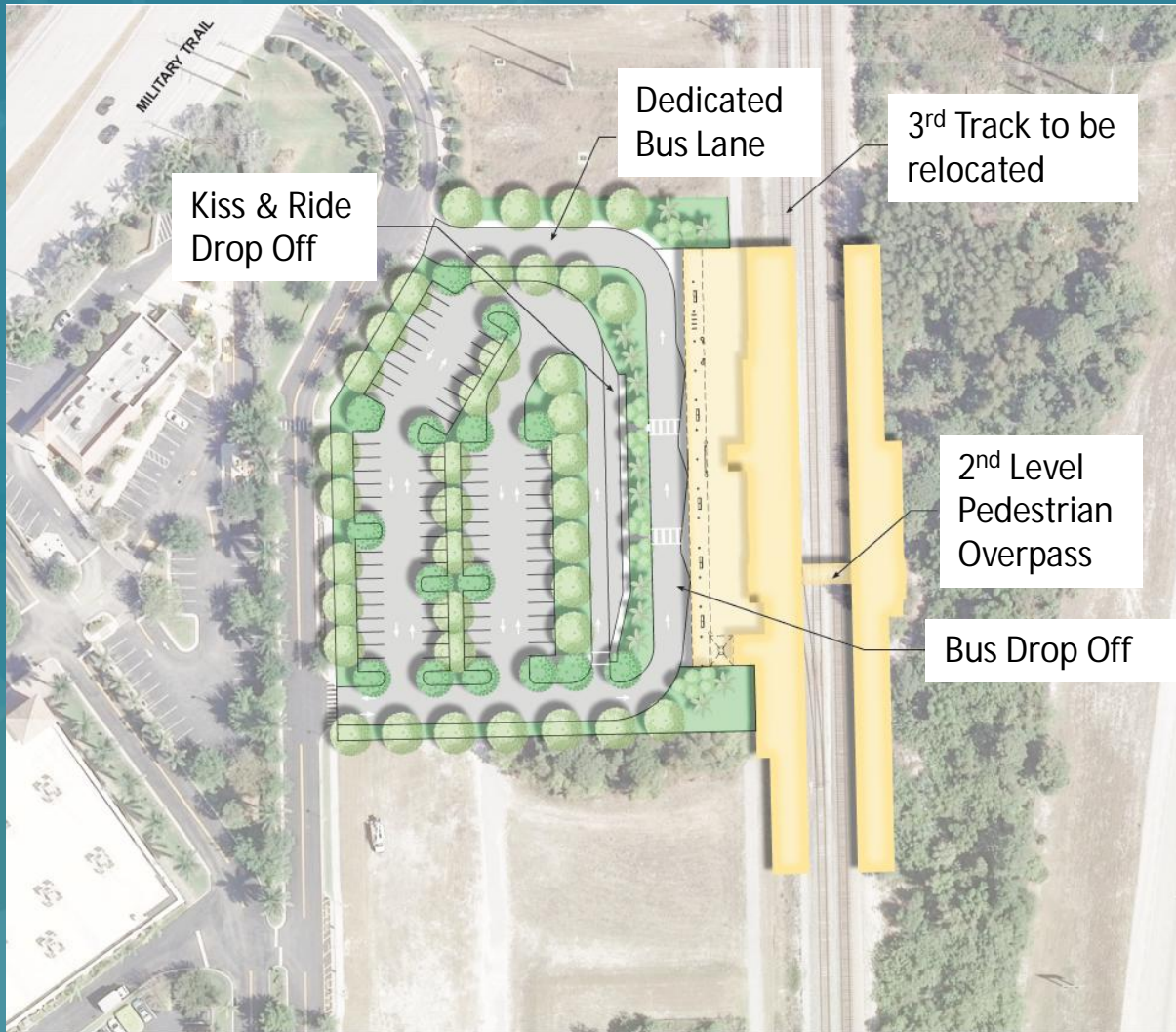
Site B



Concept Plan B



Concept Plan B



- Acreage
 - 2.43 Acres
- Parking
 - 80-90 Spaces

Other Considerations

Side Rail

Gas Regulator
Station

Close to Overhead
Transmission Lines



Overall Schedule

- Schedule
 - PD&E
 - Public Alternatives Meeting – December 5, 2017
 - Palm Beach TPA Committees – December 6-7, 2017
 - SFRTA Board Meeting – December 8, 2017
 - PTAC Meeting – December 13, 2017
 - Palm Beach TPA Board – December 14, 2017
 - Finalize Reports – April 2018
 - Public Meeting – June 2018
 - 30%/Conceptual Design
 - Survey and Geotech – January/February 2018
 - Finalize Schematic Plans – November 2018

What's Next

- Finalize Station Location and Design
 - Access
 - Parking
- Evaluate Environmental Impacts
- Evaluate Traffic Impacts
- Continuous Public Involvement
- Public Meeting in June 2018
 - Recommended station location



Existing Boca Raton Tri-Rail
Station at Yamato Road



Contact

Natalie Yesbeck Pustizzi, AICP
Transportation Planning Manager
South Florida Regional Transportation Authority

801 NW 33rd Street

Pompano Beach, FL 33064

954-788-7957

yesbeckn@sfrta.fl.gov

Merri Starr

Holt Communications

Merri@HoltCommunications.net

www.tri-railboca2study.com

Comments