



NOV. 18, 2011



Boca Raton II Tri-Rail Station
PD&E Study and 30% Documents
Public Kick-Off Meeting

August 29, 2017
Spanish River Library

Introductions

Partner Stakeholder Agencies

- FDOT District Four
- Palm Beach Metropolitan Planning Organization (MPO)
- City of Boca Raton



Agenda

- Introduction
- PD&E
 - Public Involvement
 - Engineering
 - Environmental
- Potential Station Locations
- Schedule
- What's Next



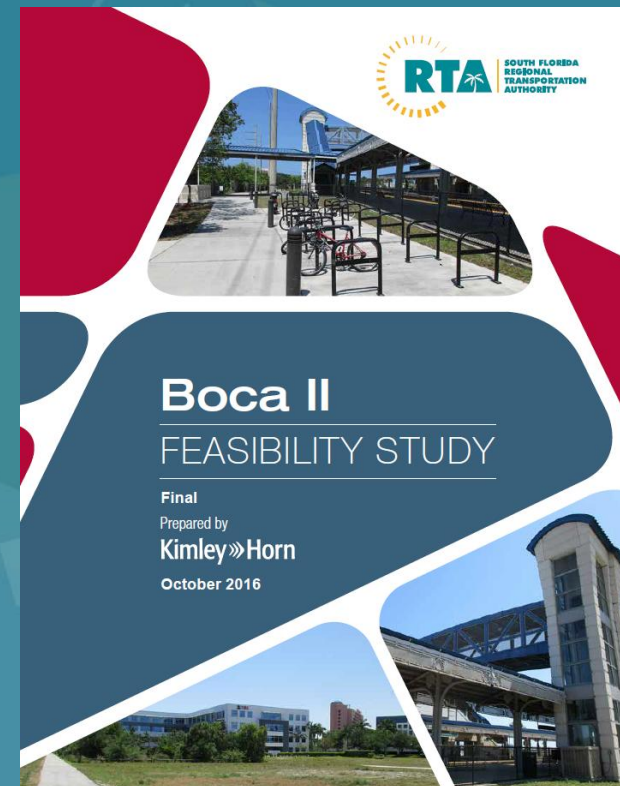
Northbound Tri-Rail Train,
South of Glades Road

Introduction

- The objectives of a Project Development and Environment (PD&E) study are to perform necessary social, environmental and engineering studies of a proposed transportation improvement to support decisions concerning if and where it should be built and what will be the basic design concepts.

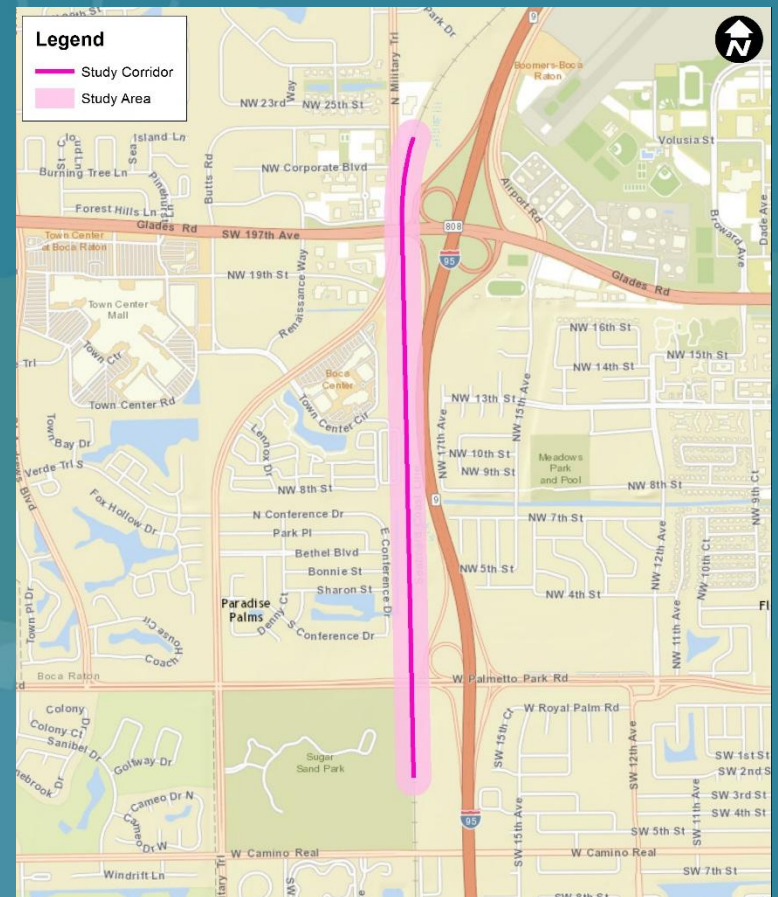
Introduction

- Background
 - Included in:
 - 2040 Long Range Transportation Plan (LRTP) - MPO
 - SFRTA Transit Development Plan (2008 and 2013)
 - FDOT Florida Rail Plan Investment Element
 - Site Location Analysis
 - Completed in May 2010
 - Feasibility Study
 - Completed in October 2016
 - Conclusion: *No Fatal Flaws*



Introduction

- Study Area
 - South Florida Rail Corridor
 - North of Glades Road to South of Palmetto Park Road





Public Involvement

Meetings

- Public Kick-Off Meeting – August 29, 2017
- Elected Officials/Agency Kick-Off Meeting – August 30, 2017
- Palm Beach MPO Board and Committees – Nov/Dec 2017
- Public Alternatives Meeting – December 2017
- Public Hearing – June 2018

Other Opportunities

- Email
- Website – www.tri-railboca2study.com

Engineering

- Traffic
- Safety
- Data Collection
- 30% Design
 - Rail
 - Roadway
 - Station



Military Trail at NW 19th Street

Engineering

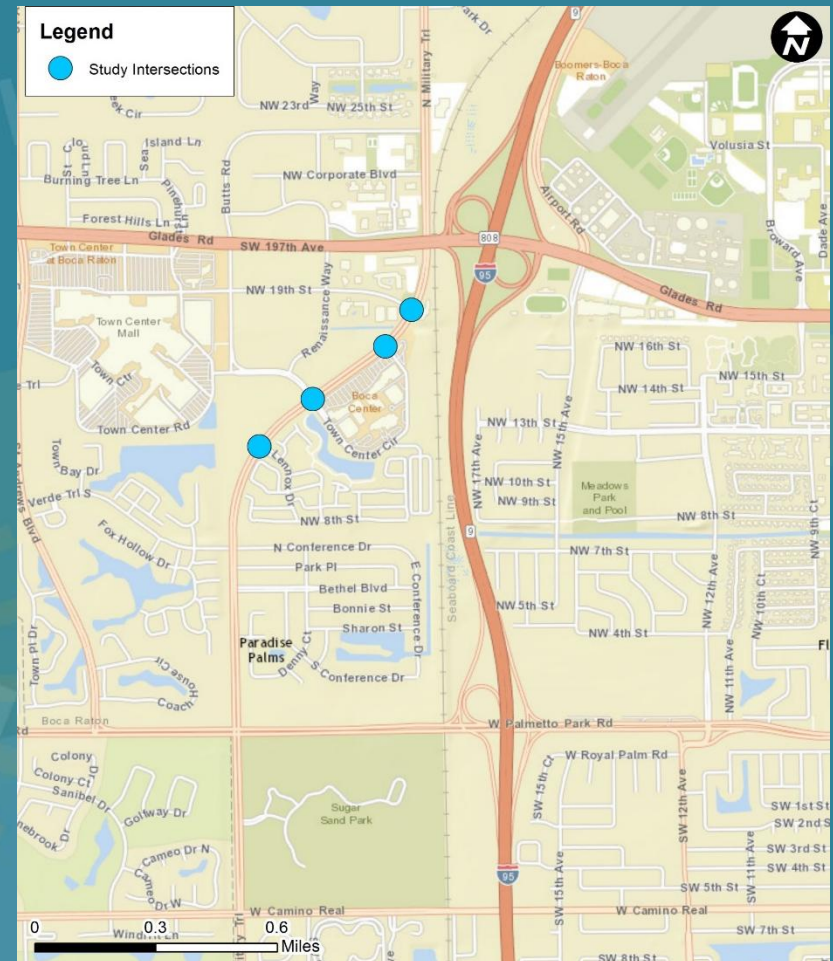
- Data Collection
 - Train Ridership
 - Vehicular Traffic
 - Pedestrian and Bicycle Traffic
 - Connecting Bus Routes
 - Tri-Rail Ridership Origin-Destination
 - Boca Raton Station at Yamato Road



PalmTran Stop at Existing Boca Raton
Tri-Rail Station

Engineering

- Study Intersections
 - Military Trail and:
 - NW 19th Street
 - Town Center Circle North
 - Town Center Circle South
 - Lennox Drive

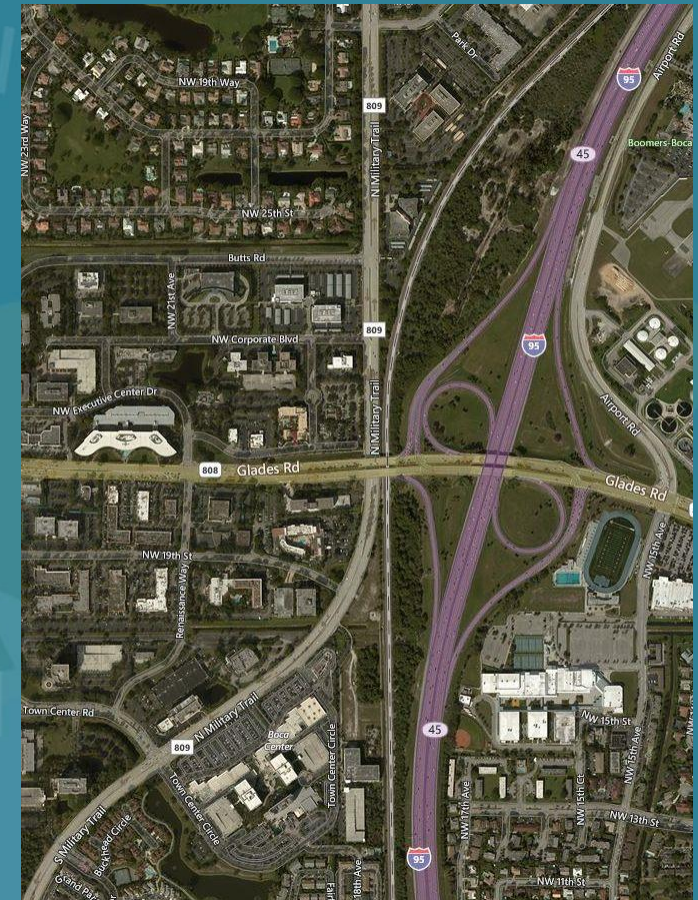


Engineering Reports

- Existing Conditions Assessment Tech Memo
- Project Traffic Analysis Report
- Safety Analysis Memorandum
- Engineering Analysis Tech Memo
- Alternatives Analysis Memo
- Constructability Review Report
- Preliminary Engineering Report

Environmental

- Social and Cultural Impacts
 - Socio-Economic
 - Archaeological and Historic
 - Visual Impact and Aesthetics
- Natural Impacts
 - Wetlands
 - Wildlife and Habitats

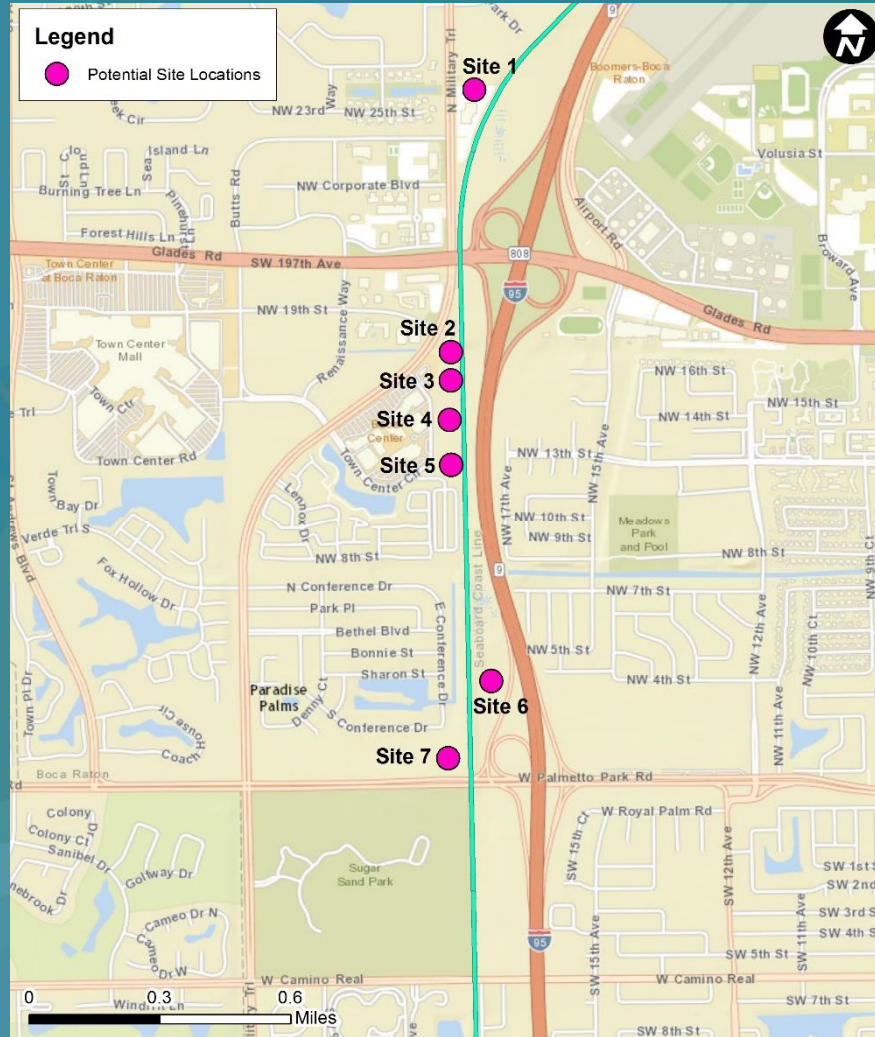




Environmental Reports

- Socio-Cultural Effect Evaluation (SCE)
- Transit Air Quality, Noise, and Vibration Report
- Level I Contamination Assessment Report
- Natural Resource Evaluation
- Water Quality Impact Evaluation
- Cultural Resources Assessment Survey
- Type II Categorical Exclusion

Potential Station Locations



Overall Schedule

- Schedule
 - PD&E
 - Kick-Off Meetings – August 2017
 - Palm Beach MPO Board and Committees – Nov/Dec 2017
 - Public Alternatives Meeting – December 2017
 - Finalize Reports – April 2018
 - Public Hearing – June 2018
 - 30%/Conceptual Design
 - Survey and Geotech – January/February 2018
 - Finalize Schematic Plans – November 2018

What's Next

- Working Toward the Public Alternatives Meeting
 - Evaluate future levels of service and operational performance
 - Rail
 - Vehicular
 - Develop Station Location and Design Alternatives
 - Evaluate Environmental Impacts
- Continuous Public Involvement
 - City of Boca Raton
 - Palm Beach MPO
 - Residents
 - Stakeholders



Existing Boca Raton Tri-Rail
Station at Yamato Road



Contact

SFRTA Project Manager
Natalie Yesbeck Pustizzi, AICP
Transportation Planning Manager

SFRTA

801 NW 33rd Street

Pompano Beach, FL 33064

954-788-7957

yesbeckn@sfrta.fl.gov

www.tri-railboca2study.com

Comments